



All Saints Court, Trewsbury Road, SE26 | £475,000

02087029777

sydenham@pedderproperty.com

pedder
We live local



In General

- Superb first floor apartment
- Open plan reception of 20'1ft
- Impressive living space flooded with light
- Share of Freehold
- Kitchen
- Two double bedrooms with sky lights
- Bathroom
- Private off street parking
- Excellent transport links

In Detail

A characterful and beautifully presented first floor, two double bedroom apartment set within the All Saints Court development on Trewsbury Road, designed to reflect the rich architectural heritage of neighbouring properties and ideally positioned in the heart of Sydenham.

This unique home showcases some stunning features including high and some vaulted ceilings, floor to ceiling windows, and exposed brickwork, creating a wonderful sense of space, light, and volume throughout. The layout has been thoughtfully designed to offer both practicality and style, with generous proportions and a strong sense of individuality.

The open-plan reception is the standout feature, offering space to relax and entertain, perfect for modern living, with ample room for a full sized dining area and comfortable lounge. There is a fitted kitchen, stylish contemporary bathroom, two spacious double bedrooms with skylights, and plenty of really useful built-in storage. Further highlights include a garage with a designated parking space.

A distinctive property perfect for those seeking something truly special.

Trewsbury Road sits within easy reach of excellent transport links including Sydenham Overground (London Bridge), Penge East and Lower Sydenham, bars, restaurants and green open spaces, all the things that this part of South East London is known and loved for.

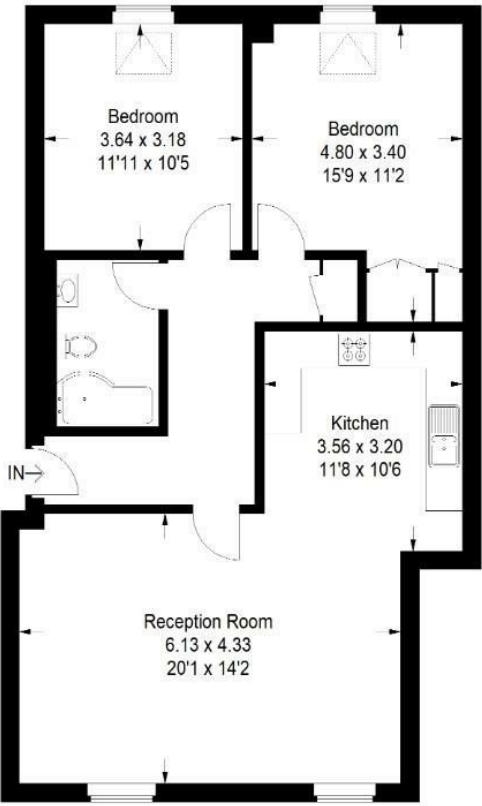
EPC: C | Council tax band: C | Lease: 999 years remaining | SC: £3,500.64 | GR: N/A | BI: Incl in SC



Floorplan

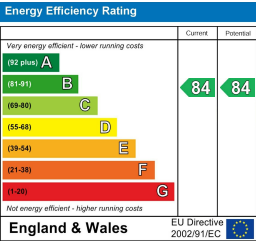
All Saints Court SE26

Approximate Gross Internal Area
80.8 sq m / 870 sq ft



First Floor

Copyright www.pedderproperty.com © 2025
These plans are for representation purposes only as defined by RICS - Code of Measuring Practice. Not drawn to Scale. Windows and door openings are approximate. Please check all dimensions, shapes and compass bearings before making any decisions reliant upon them.



Pedder Property Ltd trading as Pedder for themselves and for the vendor/landlord of this property whose agents they are, give notice that (1) these particulars do not constitute any part of an offer or contract, (2) all statements contained within these particulars are made without responsibility on the part of Pedder or the vendor/landlord, (3) whilst made in good faith, none of the statements contained within these particulars are to be relied upon as a statement of representation or fact, (4) any intending purchaser/tenant must satisfy him/herself by inspection or otherwise as to the correctness of each of the statements contained within these particulars, (5) the vendor/landlord does not make or give either Pedder or any person in their employment any authority to make or give representation or warranty whatsoever in relation to this property.